



The John Hampden School Wendover



NEWSLETTER

IN THIS ISSUE:		UPCOMING EVENTS:	
Message from Mrs. Barnes	1	04.04.25 School closes for Easter holidays at	24.04.25 SATs meeting in the school hall at
Governor Section	2		
Important Messages	3		
Curriculum	4	21.04.25 BANK HOLIDAY—School closed	01-05-25 May Day Performance for Y2 parents to watch at 9.30 am
Pupil's Section	5		
School Improvement	6	22.04.25 School opens for the summer term	05-05-25 BANK HOLIDAY—School Closed
Miscellaneous	7		

1. MESSAGE FROM MRS BARNES

It is hard to believe that the Spring Term has ended already, but Christmas does seem a long time ago and there are very clear signs that Spring is definitely here. The term has been quite a busy one and we have enjoyed numerous memorable learning opportunities.

Last Saturday we held an Open Morning in our Nursery Class and invited prospective new children and their parents to come and look around. It was lovely to see those who were able to join us and we will continue advertising the provision in order to fill all twenty six places in the class for September 2025. We do have a few remaining spaces so if you do know of anyone who is looking for high quality, Early Years education in a well resourced, nurturing environment do remind them that they need to contact us as soon as possible. Eligible children will be born between 1st September 2021 and 31st August 2022.

Today, we are saying goodbye to Mrs Wheeler, our Nursery Class Teacher. I would like to take this opportunity to thank Mrs Wheeler for all she has done during her time at JHSW. We shall miss her but wish her well for the future. Miss Hall, our new Nursery Class Teacher will replace Mrs Wheeler after the Easter holiday.

Do contact us if you require places in either breakfast club or after school club after Easter. We do have some places available currently. Breakfast club is £6.00 a session and After School Club is £14.00 a session.

The lighter evenings and the gradual improvement in the weather reminds us that summer is just around the corner and we will be continuing with our tradition of welcoming the season by celebrating May Day. On Thursday 1st May at 9.30am we are holding our annual **May Day celebration**. As space in the hall is limited we only invite parents of children in Year 2 to watch each year, as this is their last year in the school.

As usual we would ask that Year 2 parents try to make alternative arrangements for younger siblings as they often find it difficult to sit quietly through a performance lasting about one hour. If you do have to bring a younger child please would you ensure they sit on your lap and if they do start to make a distracting noise take them out of the hall until they become quieter.

On the day, as we are celebrating the fact that summer is approaching, we are inviting all children to come to school wearing clothes suitable for a summer celebration, which are appropriate to dance in. They will not need to bring their school uniform on this day.

Our Year 1 children are responsible for choosing a May King and a May Queen and their attendants and we will also have a child dressed as the Lucky Sweep. We will put lots of the photos we take on the school website so you can share the event even if you are not able to attend in person.

As this is the last newsletter of the term, may I take this opportunity to wish you a very peaceful and relaxing Easter break and I look forward to seeing you again on Tuesday 22nd April.



2. GOVERNOR SECTION

You may think that being a Governor is simply attending periodic meetings at the school, but this is not all it entails; there are many other aspects and privileges to the role. One of my favourite things is visiting the school when the children are there and seeing the many wonderful things we hear about John Hampden School Wendover in action.

Last year we had our inaugural 'Governors' Day' whereby we were invited to spend the morning, afternoon or whole day at the school. The aim was to see the school 'in action' and to understand how the daily activities translate into the reports we receive for our meetings. Whilst we typically work alongside the senior leadership team and staff to support the school's strategic goals, spending time at the school provides us with an invaluable perspective on how those goals are being implemented in practice and allows us to understand the day-to-day experiences of both pupils and staff.

We were fortunate enough to observe teaching methods and the resources available, including how the dedicated outdoor learning areas slot seamlessly into daily activities for classes. The semi-structured outdoor learning activities (we observed maths games, snakes and ladders, spelling games, dress up and story telling using puppets) provide a contrast to the more structured indoor activities with children being given the opportunity to engage in both. We also saw the dedication of the teachers and how they tailor their teaching to meet the individual needs of the children.

Talking to the children during the visits is always a pleasure and seeing how engaged and curious they are shows how staff are indeed fostering their love of learning. Two great examples of this (among many) were story time and the singing assembly where the children enthusiastically participated.

The experience of spending time at the school helps us to confirm that the reports and assessments we receive reflect what is happening at the school. These visits also strengthen our connection to the school and are an important part of how we work to ensure that the school continues to provide an excellent educational experience for every child that nurtures not just their academic potential, but their creativity, curiosity and emotional growth. By being present and engaging with the school during such visits, we are better equipped to make well-informed decisions that support the school's vision for the future and benefit our children.

It was a real privilege to attend the day, and in case you hadn't noticed, I, for one, am really looking forward to the next Governor Day in April!

In the meantime, I hope you all have a wonderful Easter break.



Melanie Bradley
Parent Governor

The Governing Board is always willing to listen to parental queries and to explain in more detail what the Governing Body does. They do realise, however, that it may not always be appropriate to speak to them at the school gate so please feel free to email the Chair of Governors, James Edley, Chair@johnhampdenwendover.co.uk if you would like to raise a matter for discussion.

We continue to be very concerned about the safety of our pupils travelling to and from school, and we need to encourage positive change. We want our pupils to be using green and active travel routes where they can. If you need to drive, we ask those parents to respectfully park away from the main school roads and walk the last part of your journey. We also want a calm start to the day, with less anti-social behaviour around the campus entrance - and ensuring emergency access for the Campus and residents at all times—thank you in anticipation of your support.

Please see further information within the Miscellaneous section of this newsletter.

3. IMPORTANT MESSAGES

COMIC RELIEF

Many thanks for allowing your children to participate in this fund raising event and for your donations to this worthy cause and it was great to see the children looking so 'red' in assembly.

P.E KITS & SCHOOL UNIFORM

During the Easter Holiday we would be grateful if you would check that your child has a complete P.E. kit including tracksuit bottoms and a sweatshirt for use outside when necessary. Your child also needs to have a correctly fitting pair of P.E. shoes (preferably not laces unless they can tie them themselves!) **All kit must be named.** Children with long hair should have it tied back and anyone with earrings should have them removed at home or be provided with tape to cover them during P.E. sessions.

Please avoid allowing your children to come to school wearing hair accessories that could be distracting or jewellery (necklaces, bracelets etc.) We are seeing more of these things in school and such items are not included in our uniform policy. We do allow children to wear low cost watches to school (not Smart watches) but only if parents/carers understand that pupils are responsible for them and they cannot be worn for P.E. lessons.

WATER BOTTLES

We encourage our KS1 pupils to bring a water bottle into school which can be stored on their table and accessed when necessary. Bottles must only contain water—no juice or squash as this can become very sticky and is attractive to ants! Children in EYFS have access to water at all times so do not need to bring a water bottle.

DRINKS IN PACKED LUNCHES

If you are providing your child with a packed lunch please will you ensure you provide a drink too. We are noticing a number of children whose lunch does not include a drink and it is important that children remain hydrated throughout the day.

BIKES & SCOOTERS

Children must dismount from their bicycles and scooters as soon as they enter the school grounds. Thank you

PARKING ON THE CAMPUS AND IN THE LOCAL COMMUNITY

This is a further reminder that parents should not park in the school car park unless they have made a specific arrangement with the school. Also, please refrain from walking your children up or down the school drive when the gates are open. This is a vehicle only route. The pedestrian pathway is clearly marked. Please also be mindful when parking off campus to not block local residents driveways.

TIMING FOR THE END OF THE SCHOOL DAY

Just a reminder that school finishes at 3.15pm. Parents and carers should arrive promptly to pick their children up at this time.

MESSAGE TO PARENTS OF CHILDREN IN YEAR TWO

Please note we are unable to authorise any holidays during May for pupils in Year Two as this is an assessment period for this cohort of pupils. Please do not book holidays during this time as your children will miss the tasks and tests that form part of this assessment process.

SUN PROTECTION

As warmer weather approaches, just a reminder about sun protection. We ask that children have long-lasting sun cream applied before they come to school. If your child has particularly fair skin, please talk to the class teacher if sun cream needs to be applied more regularly. In these circumstances we ask that children are taught how to apply their own sun cream .

Children should be provided with a **named** sunhat or cap in the summer . At school we prefer children to wear a hat or cap rather than sunglasses if possible.

HEADLICE

We have had a case of headlice recently in the school so please can you check your child's hair regularly and treat if necessary. Thank you.

4. CURRICULUM

FOUNDATION STAGE

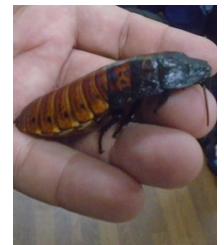
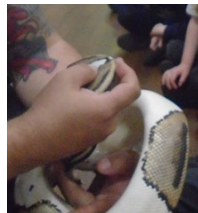
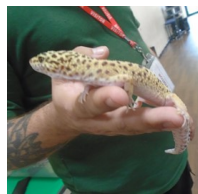
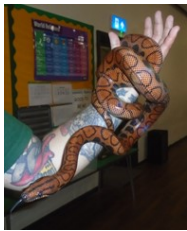
Wild Science – Animal Workshop

During our 'Amazing Animals' topic this half term, we organised for 'Wild Science' to visit Foundation Stage. It was a wonderful experience for the children.

A selection of animals was brought in for the children to meet and touch if they so wished. The animals included two snakes (a boa and python), African snails, a gecko and a cockroach.

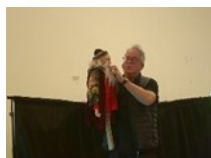
The children loved using their senses to explore and get to know each animal. They learnt lots of interesting information about them and were fascinated by the facts provided. Many questions were generated from the visit.

After the experience, the children felt inspired. They wrote and created drawings of some of the animals. They even made some fantastic models of the animals!



Earlier this term, Year Two enjoyed attending a Design Technology workshop about puppet making and were also treated to a performance which helped them to understand more about the purpose of puppets as a source of entertainment. This ties in to one important element of D&T 'making for a purpose'.

Afterwards, the classes were excited to make puppets of their own, carefully following the designs that they had produced and using the resources that they had collected prior to the day. They were proud of their creations which included an array of paper folding and joining techniques that they had been taught. This was followed by an evaluation session where the children used the value of Reflection to consider the success of their puppets and also time to think and record how they would improve their model making next time.



5. PUPIL'S SECTION

Here are the comments from some of the children who attended the puppet workshop.



Annabelle said that she loved her puppet because she used all of the joining skills she had been taught e.g. split pins, tape, treasury tags and paper clips.

Louis explained that he liked making his puppet because he could move the tongue where ever he wanted as he had used a treasury tag to join it.



Eden said that she put an L-Brace on the fold of her paper plate puppet to make it stronger. She explained that she used the paper folding techniques of curling and concertina to decorate her puppet. Harry commented that he made a hole using a single hole punch to thread some string through. This was to make the mouth of his puppet open and close.



Alfie reported that he loved seeing the children perform 'Who Let the Dogs Out' using different types of hand puppet during the performance in the hall.

Evie said that the puppet making workshop in class was fun and creative! She said she used different joining techniques to make her puppet move the way that she wanted.

Voluntary Contributions – Your support makes activities like these happen!

Many activities that have been held throughout the year have been made possible through the support of the many parents who helped with voluntary contributions. These experiences provide the children with hands on opportunities to consolidate the learning they are doing in school and help bring learning to life.

Unfortunately, activities and events such as these are under threat of not being able to take place in the future if we are unable to secure enough voluntary contributions.

Please look out for future termly voluntary contribution letters from all year groups, which will detail the extracurricular activities we need your help and support to provide.

Many thanks

6. SCHOOL IMPROVEMENT

We aim to keep you fully informed of our actions linked to the school improvement plan. Since the last newsletter we have made progress linked to the actions outlined below:

GOAL A: QUALITY OF EDUCATION

Tracking pupil progress is a necessary part of monitoring in the school. Each term, following Assessment Weeks, staff give a summative assessment level for each pupil in reading, writing and mathematics. This information is used to track progress from one term to the next. It is then possible for us to identify those children who are making below, expected or above expected progress. For any child that has not made expected progress, teachers are required to identify actions they will take to address any concerns. This

Careful tracking of pupil progress helps us to maintain the high standards of achievement we have come to expect at John Hampden.



We have informed Year 2 parents of a meeting in April that covers the Year 2 Statutory Assessment (SATs) process.

GOAL C: PERSONAL DEVELOPMENT

PSHE and Relationships teaching is carefully planned and thoughtfully delivered at John Hampden.

Throughout the Spring Term the classes have continued to follow our bespoke teaching programme but there is a great deal of incidental teaching that goes on, on a daily basis too. We recognise that encouraging positive social development is something that we must do well if our pupils are to become effective learners and good, kind friends to others.

Mrs Spencer takes the lead for PSHE and Relationships teaching and she regularly monitors the impact of the work we are doing.



GOAL B: BEHAVIOUR & ATTITUDES

As we reach the end of the Spring Term we are, once more, in the process of monitoring attendance and punctuality. This is done at the end of each half term and families are contacted if their child's attendance is giving cause for concern. Obviously the usual childhood illnesses impact attendance and we are understanding of absence associated with such illness. For our young pupils punctuality is really a family issue so if you are experiencing challenges in getting your child to school on time it is important that you share the issues with us—we may be able to help!



GOAL D: LEADERSHIP & MANAGEMENT

With Mrs Parkinson appointed as the new Head Teacher for JHSW, thoughts now turn to appointing her successor. We shall look to recruit early in the Summer Term.

We have welcomed several new members of staff to the school team recently. All new staff have completed relevant induction training and they will continue to take on training, as required by their role.



7. MISCELLANEOUS

Healthy and safe school travel in Wendover

Currently over 1,700 young people travel to schools and facilities on the Wharf Road Campus every day. With significant number of young people travelling it brings with it a lot of vehicle-based traffic and this is causing significant problems for all those that use the campus and the local residents. Together, the Wendover Parish Council, Buckinghamshire Council and local schools have been working in partnership over the last couple of years to find solutions.

According to a recent traffic count survey, paid for and organised by this group, there are more than 900 vehicles accessing Wharf Road and Manor Road every morning between 8-9am, and similarly between 2.45-3.45pm, leading to significant problems in terms of accidents and near misses involving children, inappropriate parking, unauthorised access to the campus site and congestion in the wider area.

Alongside the traffic counts, a parent/ carer travel survey was also conducted, which, identified some of the key thoughts and concerns of those using the campus.

Young people's safety was identified as the top priority, with many respondents choosing not to allow their children to walk or cycle to school independently due to the current issues around traffic and parking. However, it was also recorded that many parents/carers feel that they have to drive due to time constraints and the cost and availability of public and school transport.

Cllr Rob Goodall for Wendover Parish Council has said: "When we spoke to our residents about transport in Wendover, this was identified as the number one issue out of a long list. We have been working hard with our partners to investigate solutions and see where, with collaborative working with Buckinghamshire Council, who control the road and that has overall authority for the highway network, we can look to improve the safety, health and wellbeing of our children travelling to school." It is important that we seek to provide an environment that enables everyone to safely travel to and through the area and we will be seeking to challenge those that are parking and driving inappropriately and anti-socially."

So, what next?

- This working group we will be holding numerous walking, cycling and greener travel awareness days at the Campus and surrounding roads.

- Car users in the main were open to parking away from the Campus. We will be working together to clearly communicate alternative options for dropping off and picking up.

Other measures are being investigated, from physical traffic calming measures such as speed bumps, to additional safer crossing points and car sharing schemes - all addressing the growing congestion and traffic pressures, and local concerns.

For any further information (including further details of the surveys) or to help support this initiative please get in touch with Cllr Robert Goodall Robert.goodall@wendover-pc.gov.uk



John Hampden School



Uniform

Pre loved sale

Friday 25th April at drop off & pick up

Under shelter outside Crickets

Uniform | PE kit | Accessories

Modeshift STARS Travel Plan

As a school we are continuing our journey with the Modeshift Travel Plan, an initiative to promote more sustainable travel choices for pupils, parents, staff and visitors to our school. We are trying to make our journey to school the safest it can be. FixMyStreet is a website that we are promoting. It's an easy way of recording any cause of concerns that affect your journey to school. Please see the poster below or follow this link www.fixmystreet.com for more details on how to fix our roads and keep our children safe!



**TIRED OF
POTHOLE
FLY-TIPPING
LOOSE PAVING
DOG POOP VANDALISM
BROKEN STREET LIGHTING?**

**REPORT THEM TO
THE COUNCIL WITH
 **FixMyStreet****

**IT'S AS SIMPLE AS THAT
 **FixMyStreet.com****

another project from the lovely people at **mySociety**



Hampden Financial Services are proud to be offer Parents, Guardians and Staff of John Hampden School the opportunity to review their mortgage and also raise funds for John Hampden School.

For every mortgage completed via Hampden Financial Services, Hampden Financial Services will make a £50 donation to John Hampden School.

So whether you are looking to remortgage or move home please contact us via below and just mention John Hampden School when you make initial contact.

Phone – 07812 063256

Email - Jeff.harris@hampdenfs.co.uk

Feel free to check out our reviews on Facebook and google under Hampden Financial Services

Terms and Conditions are available on request

YOUR HOME MAY BE REPOSSESSED IF YOU DO NOT KEEP UP REPAYMENTS

ON YOUR MORTGAGE



Christopher Pallet

Professional advice since 1973

Proudly sponsoring



Christopher Pallet, Wendover's longest established independent estate agent are proud to be sponsoring Friends of John Hampden School.

As Part of our sponsorship we will be donating £100 to the school, for every parent/guardian or teacher that successfully sells their property through Christopher Pallet Estate Agents in Wendover.

Residential Sales & Lettings

Mortgages | Surveys | Conveyancing | Land & New Homes | Professional Advice



Follow us on Instagram
[christopher_pallet_homes](https://www.instagram.com/christopher_pallet_homes)



Follow us on Facebook
[Christopher Pallet Wendover](https://www.facebook.com/ChristopherPalletWendover)

For all your property requirements contact
wendover@christopherpallet.com
or call 01296 625000